

Job Name:	
Tag#	



Submittal Data Sheet	FFQ15Q2VJU
1.25-Ton Ceiling Mounted Indoor Unit	



Complete warranty details available from your local dealer or at www.daikincomfort.com. To receive the 12-Year Parts Limited Warranty, online registration must be completed within 60 days of installation. Online registration is not required in California or Quebec. *If product is installed in a commercial application, limited warranty period is 5 years.*

Indoor Specifications				
	Cooling		Heating	
	H	M	H	M
Airflow Rate (cfm)	420	367	441	385
	L		L	
	293		307	
Sound (dBA) H / M / L	40 / 37 / 31		40 / 37 / 31	
Dimensions (H x W x D) (in)	10-1/4 x 22-5/8 x 22-5/8			
Weight (Lbs)	36			
Nominal Capacity (Btu/hr)	15,000			

*See Outdoor Unit for Rated Capacities

Piping	
Liquid (in)	1/4
Gas (in)	1/2
Drain (in)	1-1/32

	Electrical	
	Cooling	Heating
Running Current (Rated) (A)	.29/.26*	.29/.26*
Power Consumption (Rated) (W)	28/28*	28/28*

*208/230V

Optional Accessories



Included	Part Number	Description
	BRC1E73	Wired Navigation Remote Controller
	BRC082A42W	Wireless Remote Controller (White)
	BRC082A42S	Wireless Remote Controller (Silver)
	BYFQ60C2W1S	Low Profile Decoration Panel (Silver) - 1- ¹³ / ₁₆ x 24- ⁷ / ₁₆ x 24- ⁷ / ₁₆
	BYFQ60C2W1W	Low Profile Decoration Panel (White) - 1- ¹³ / ₁₆ x 24- ⁷ / ₁₆ x 24- ⁷ / ₁₆
	BRYQ60A2S	Sensor kit (Silver) Intelligent Eye, Comfort Airflow, and Floor Sensor
	BRYQ60A2W	Sensor kit (White) Intelligent Eye, Comfort Airflow, and Floor Sensor
	BDBHQ44C60	Sealing member of air discharge outlet
	KAFQ441BA60	Long-life filter
	DACA-CP2-1	Maxi Orange Condensate Pump
	DACA-CP3-1	Mini Condensate Pump 5 gph
	AZAI6WSCDKA	DKN Cloud Wi-Fi Adaptor
	**One Controller & Decoration Panel are Required	

Daikin North America LLC 5151 San Felipe, Suite 500 Houston, TX 77056

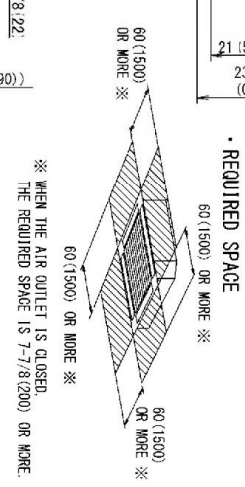
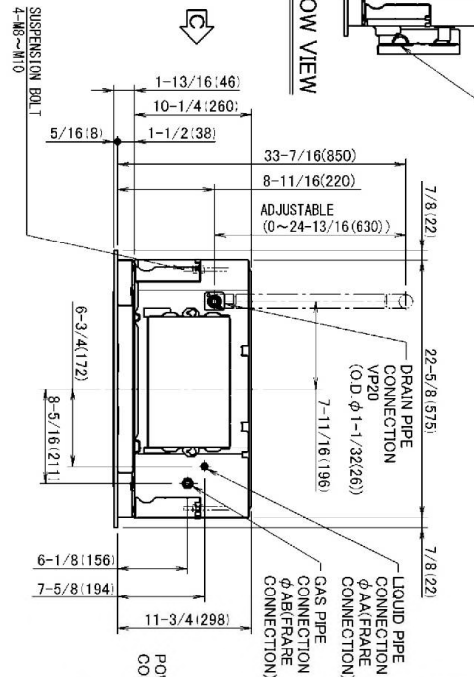
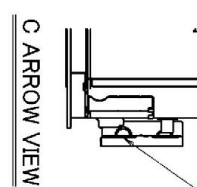
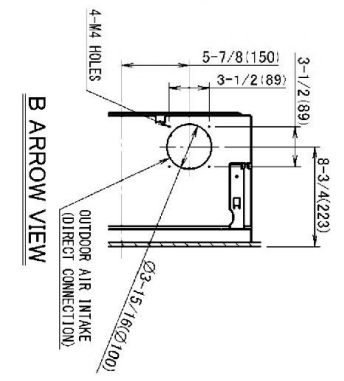
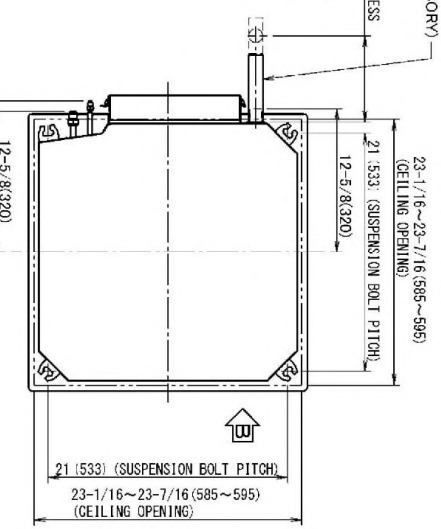
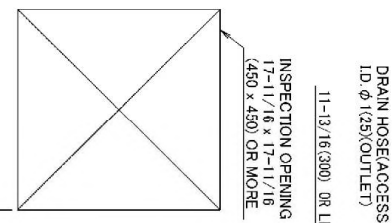
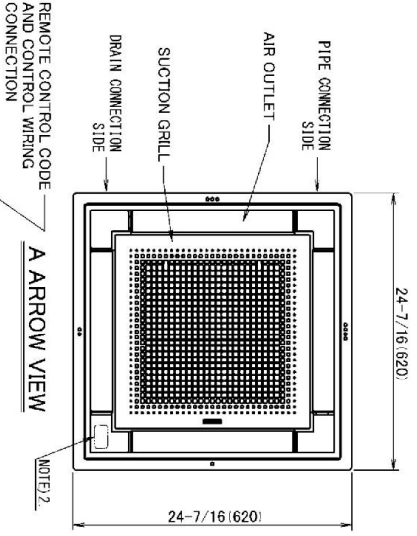
(Daikin's products are subject to continuous improvements. Daikin reserves the right to modify product design, specifications and information in this data sheet without notice and without incurring any obligations)

FFQ15Q2VJU Dimensional Data



• DECORATION PANEL
 BYF060C2RH FRESH WHITE NO.5
 BYF060C2MS DAIKIN SILVER

UNIT: inch(mm)



NOTE 1. STICKING LOCATION FOR MANUFACTURE'S LABEL
 MANUFACTURE'S LABEL FOR INDOOR UNIT: ON THE BELL MOUTH INSIDE SUCTION GRILLE
 MANUFACTURE'S LABEL FOR DECORATION PANEL: ON THE LOWER FRAME INSIDE SUCTION GRILLE
 2. IN CASE OF USING WIRELESS REMOTE CONTROLLER, THIS POSITION WILL BE A SIGNAL RECEIVER.
 3. WHEN THE TEMPERATURE AND HUMIDITY IN THE CEILING EXCEEDS 85°F (30°C) AND RH 80% OR THE FRESH AIR IS INDICATED INTO THE OUTLET ON THE UNIT, CEILING 24 HOUR FRESH AIR AND ADJUSTABLE RANGE IS AVAILABLE FOR THE UNIT. CEILING 24 HOUR FRESH AIR AND ADJUSTABLE RANGE IS AVAILABLE FOR THE UNIT. CEILING 24 HOUR FRESH AIR AND ADJUSTABLE RANGE IS AVAILABLE FOR THE UNIT. CEILING 24 HOUR FRESH AIR AND ADJUSTABLE RANGE IS AVAILABLE FOR THE UNIT.
 4. THROUGH THE INSTALLATION IS ACCEPTABLE UP TO MAXIMUM OF 23-1/16 (585) SQUARE CEILING OPENING. KEEP THE CLEARANCE OF 3/8 (10) OR LESS BETWEEN THE MAIN UNIT AND THE CEILING OPENING, SO THAT THE PANEL OVERLAP ALLOWANCE CAN BE ENSURED.

MODEL	MA	MB
FFQ09Q2VJU	1/4 (6.4)	3/8 (9.5)
FFQ12Q2VJU		
FFQ15Q2VJU		
FFQ18Q2VJU		1/2 (12.7)

3D106039

Daikin North America LLC 5151 San Felipe, Suite 500 Houston, TX 77056

(Daikin's products are subject to continuous improvements. Daikin reserves the right to modify product design, specifications and information in this data sheet without notice and without incurring any obligations)