

## Inverter Driven Heat Pump

## 18K BTU Single Zone Wall Mounted System

Job Name \_\_\_\_\_  
 Location \_\_\_\_\_  
 Engineer \_\_\_\_\_  
 Submitted To \_\_\_\_\_  
 Submitted By \_\_\_\_\_  
 Reference \_\_\_\_\_

Date \_\_\_\_\_  
 Approval \_\_\_\_\_  
 Construction \_\_\_\_\_  
 Unit No \_\_\_\_\_  
 Drawing No \_\_\_\_\_

### PRODUCT FEATURES

Auto Changeover  
 24 Hour Timer  
 Auto Louver: 4 way  
 Minimum Heat Mode  
 Quiet Mode  
 Auto Restart  
 Economy Mode  
 Auto Fan



### MODEL NUMBERS

Indoor Unit	ASU18RLB
Outdoor Unit	AOU18RLB
System	18RLB

### EFFICIENCIES

SEER	19
EER	12.5
HSPF	10.6
COP	14

### OUTDOOR TEMPERATURE OPERATION RANGE

Cooling	*F(*C)	14 to 115 (-10 to 46)
Heating		5 to 75 (-15 to 24)

### CAPACITIES

Cooling	Rated	BTU/hW	18,000
	Min.-Max.		3100 - 19000
Heating	Rated		18,000
	Min.-Max.		7000 - 20000

### LINESET REQUIREMENTS

Connection Method	Flare		
Liquid	in (mm)		Ø 1/4 (Ø 6.35)
Gas			Ø 1/2 (Ø 12.70)
Pre-Charge Length	ft (m)		49 (15)
Minimum Length			10 (3)
Maximum Length			66 (20)
Max. Height Diff.			49 (15)

### INDOOR DIMENSIONS & WEIGHT

Net (H x W x D)	in	320 x 998 x 228
	mm	12-10/16 x 39-5/16 x 9
Gross (H x W x D)	in	319 x 1090 x 429
	mm	12-9/16 x 42-15/16 x 16-14/16
Net Weight	lb (kg)	31 (14)
Gross Weight		40 (18)

### OUTDOOR DIMENSIONS & WEIGHT

Net (H x W x D)	in	24 - 7/16 x 31 - 2/16 x 11 - 7/16
	mm	620 x 790 x 290
Gross (H x W x D)	in	28 - 1/16 x 37-3/16 x 15 - 9/16
	mm	713 x 945 x 395
Net Weight	lb (kg)	86 (39)
Gross Weight		93 (42)

### Warranty Information



7 Year Compressor, 5 Year Parts out-of-the-box Warranty



10 Year Compressor, 10 Year Parts Warranty when registered within 30 days of installation in a residence



12 Year Compressor, 12 Year Parts Warranty when registered within 30 days of installation in a residence, and installed by a Fujitsu Elite contractor

### ACCESSORIES

UTY-TTRX	3rd Party Thermostat Converter
FJ-IR-WIFI-1NA	Intesis WiFi IR Module
FJ-RC-WIFI-1NA	Intesis WiFi Wired Module
UTY-TFNXZ2	WiFi Interface Module
UTY-RNNUM	Wired Remote
UTY-RVNUM	Wired Remote w/backlight
UTY-RSNUM	Simple Remote
UTY-XWZX	Dry Contact Wire Kit



This system combination is Energy Star qualified



Indoor Unit ETL#: 3170288  
 Outdoor Unit ETL#: 91987

Effective Date: 9/27/2018

Version 18RLB -2018A

Due to continuous product improvements, specifications are subject to change without notice. Please log in to the Fujitsu Portal for the most up-to-date documentation  
<https://portal.fujitsugeneral.com>

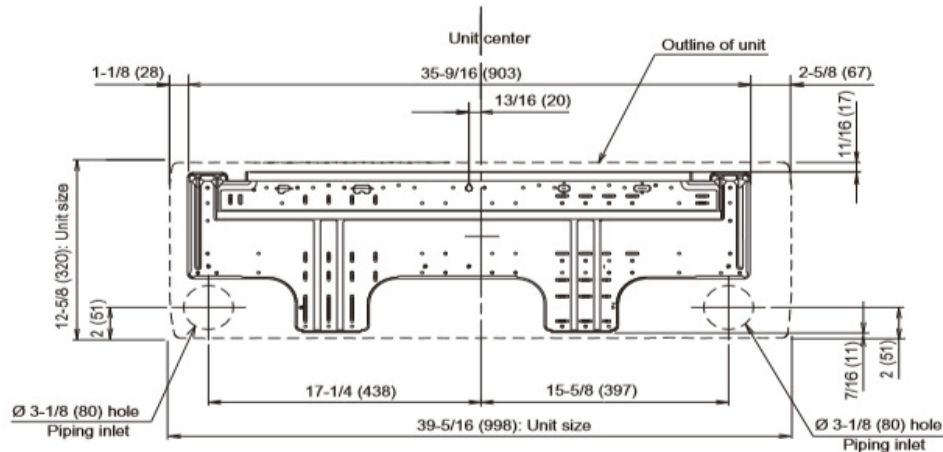
Fujitsu General America, Inc. • 353 Route 46 West Fairfield, NJ 07004 • Toll Free: (888) 888-3424 • [www.fujitsugeneral.com](http://www.fujitsugeneral.com)

## Inverter Driven Heat Pump

## 18K BTU Single Zone Wall Mounted System

FAN DATA					ELECTRICAL SPECIFICATIONS						
Indoor Unit Airflow Rate	Cooling	High	CFM (m3/h)	541 (920)	Voltage/Frequency/Phase			208/230V ~ 60Hz			
		Medium		435 (740)	Voltage Range			187-253V			
		Low		365 (620)	Current	Cooling	Rated	A	6.4		
		Quiet		306 (520)		Heating	Rated		5.8		
	Heating	High		541 (920)	Maximum Operating Current		Cooling		8.3		
		Medium		435 (740)			Heating		11.8		
		Low		365 (620)	Starting Current		6.4				
		Quiet		318 (540)	MCA				14.6		
Outdoor Unit Airflow Rate	Cooling		1,206 (2,050)	Maximum Circuit Breaker					15		
Heating		1,083 (1,840)									
SOUND PRESSURE											
Indoor Unit	Cooling	High	dB (A)	42	Input Power	Cooling	Rated	kW	1.44		
		Medium		35			Min.—Max.		1.63		
		Low		31		Heating	Rated		1.285		
		Quiet		26					Min.—Max.	2.06	
	Heating	High		43	Power Factor	Cooling		%	98		
		Medium		36		Heating			96		
		Low		33	OTHER						
		Quiet		28	Moisture Removal		pints/h (L/h)		1.9(4)		
Outdoor Unit	Cooling		51	Energy Star			No				
Heating		50	Drain hose	Material		PVC					
REFRIGERANT											
Type				R410A							
Charge	lb oz	3lbs. 1 oz									
	kg	1									
Oil Type				POE (RB68)							

### Wall Bracket Data:



The Fujitsu logo is a worldwide trademark of Fujitsu General Limited. The Halcyon logo and name is a worldwide trademark of Fujitsu General Limited and is a registered trademark in Japan, the USA and other countries or areas. Copyright 2018 Fujitsu General America, Inc. Fujitsu's products are subject to continuous improvements. Fujitsu reserves the right to modify product design, specifications and information in this brochure without notice and without incurring any obligations.

Note: Specifications are based on the following conditions:

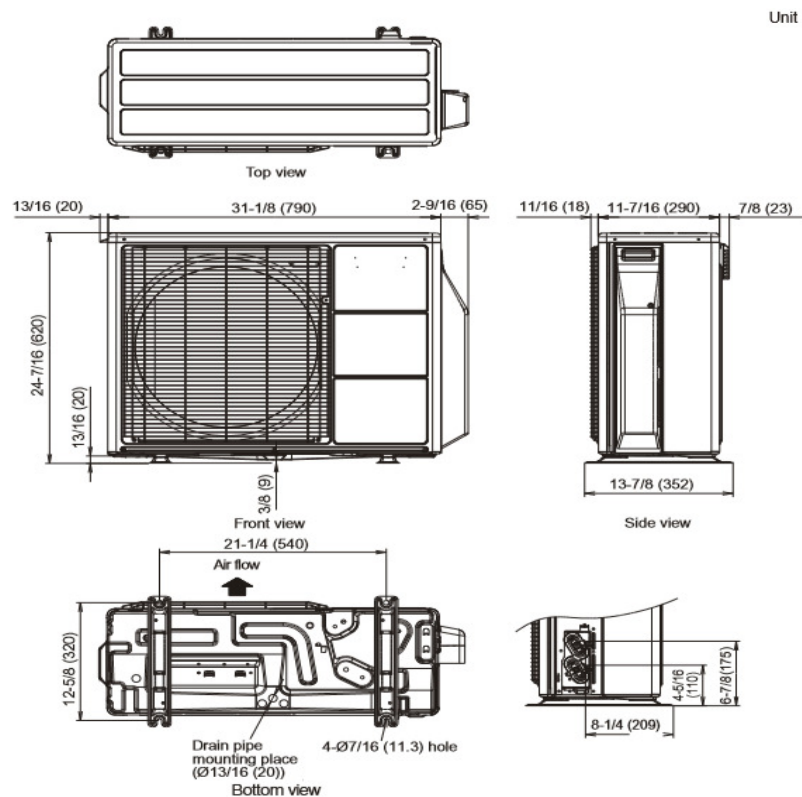
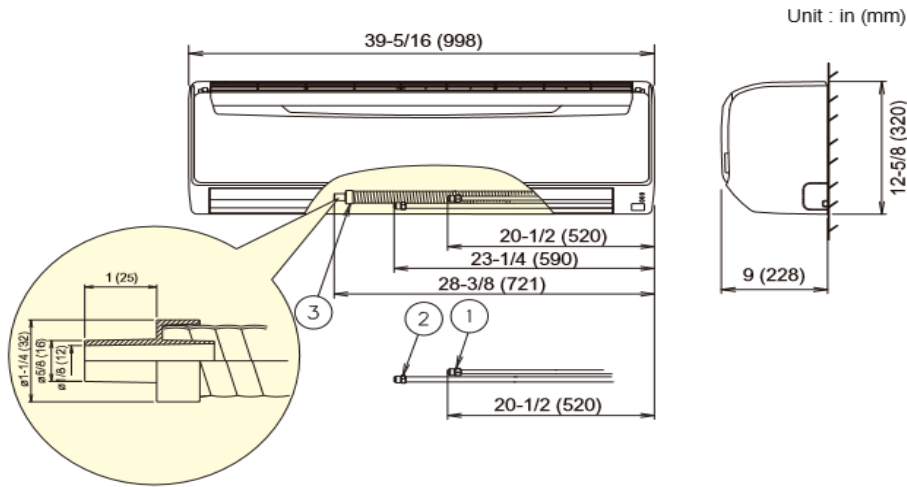
Cooling: Indoor temperature of 80°F (26.7°C) DB/67°F (19.4°C) WB, and outdoor temperature of 95°F (35°C) DB/75°F (23.9°C) WB. Heating: Indoor temperature of 70°F (21.1°C) DB/60°F (15.6°C) WB, and outdoor temperature of 47°F (8.3°C) DB/43°F (6.1°C) WB. Pipe length: 25ft. (7.5m), Height difference: 0ft. (0m) (Outdoor unit - indoor unit).

Inverter Driven Heat Pump

18K BTU Single Zone Wall Mounted System

DIMENSIONS

Units: In. (mm)



The Fujitsu logo is a worldwide trademark of Fujitsu General Limited. The Halcyon logo and name is a worldwide trademark of Fujitsu General Limited and is a registered trademark in Japan, the USA and other countries or areas. Copyright 2018 Fujitsu General America, Inc. Fujitsu's products are subject to continuous improvements. Fujitsu reserves the right to modify product design, specifications and information in this brochure without notice and without incurring any obligations.

Note: Specifications are based on the following conditions:  
Cooling: Indoor temperature of 80°F (26.7°C) DB/67°F (19.4°C) WB, and outdoor temperature of 95°F (35°C) DB/75°F (23.9°C) WB. Heating: Indoor temperature of 70°F (21.1°C) DB/60°F (15.6°C) WB, and outdoor temperature of 47°F (8.3°C) DB/43°F (6.1°C) WB. Pipe length: 25ft. (7.5m), Height difference: 0ft. (0m) (Outdoor unit - indoor unit).